



ISO-VDMA NORM
NORMA ISO-VDMA

Material: Aluminium
Materiale: Alluminio

NARROW FEMALE HINGE FOR SQUARE JOINT WITH ARTICULATED HEAD DIN648K
CERNIERA FEMMINA STRETTA PER ARTICOLAZIONE A SQUADRA CON TESTINA SNODATA DIN648K

A

A

A

B

B

C

C

D

D

E

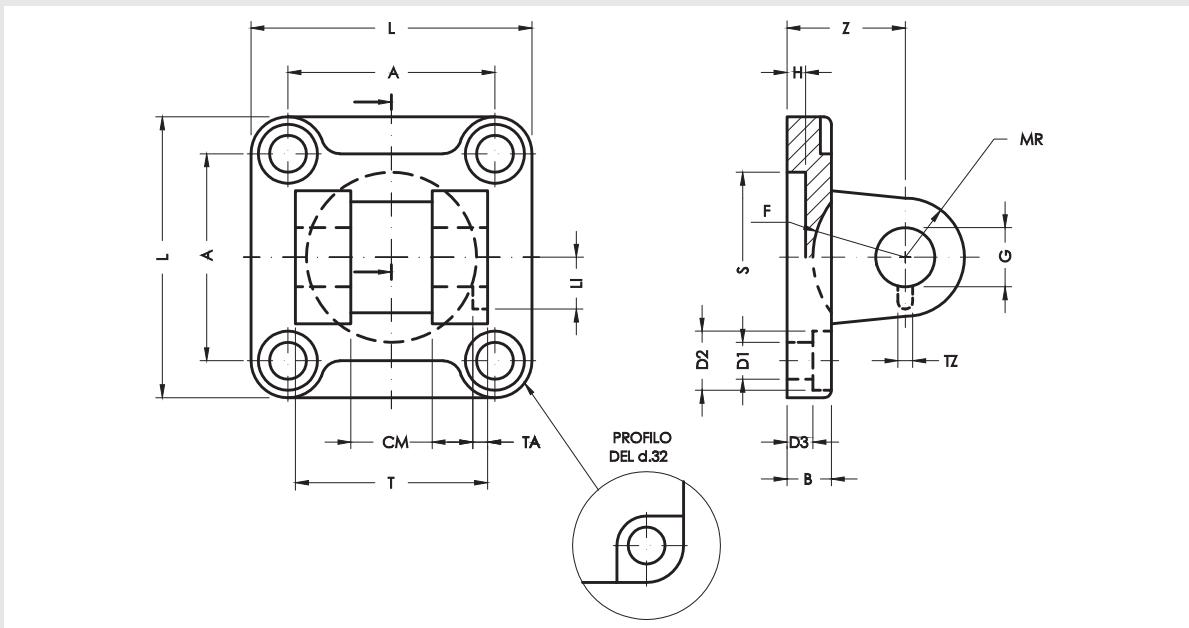
E

F



Code ordering / Codice ordinazione

0056 / diam.



Weight peso (g)	D.Cil.	L ±0.5	T d 12	CM H 14	A ±0.2	Z ±0.2	H +1 0	B	D3 ±0.5	S H 12	G F 7	MR +1 0	D1 +0.4 -0.2	D2	TA +0.2	TZ +0.2	LI +0.3	F min
42	32	45	34	14	32.5	22	5	9	5.5	30	10	10	6.6	11	3	3.3	11.5	17
70	40	52	40	16	38	25	5	9	5.5	35	12	12	6.6	11	4	4.3	12	20
112	50	65	45	21	46.5	27	5	11	6.5	40	16	14	9	15	4	4.3	14	22
194	63	75	51	21	56.5	32	5	11	6.5	45	16	18	9	15	4	4.3	14	25
382	80	95	65	25	72	36	5	14	10	45	20	20	11	18	4	4.3	16	30
610	100	115	75	25	89	41	5	14	10	55	20	22	11	18	4	6.3	16	32
1100	125	140	97	37	110	50	7	20	10	60	30	25	14	20	6	6.3	24	42
2030	160	180	122	43	140	55	7	20	10	65	35	30	18	26	6	6.3	26.5	46
3400	200	220	122	43	175	60	7	25	11	75	35	30	18	26	6	6.3	26.5	49